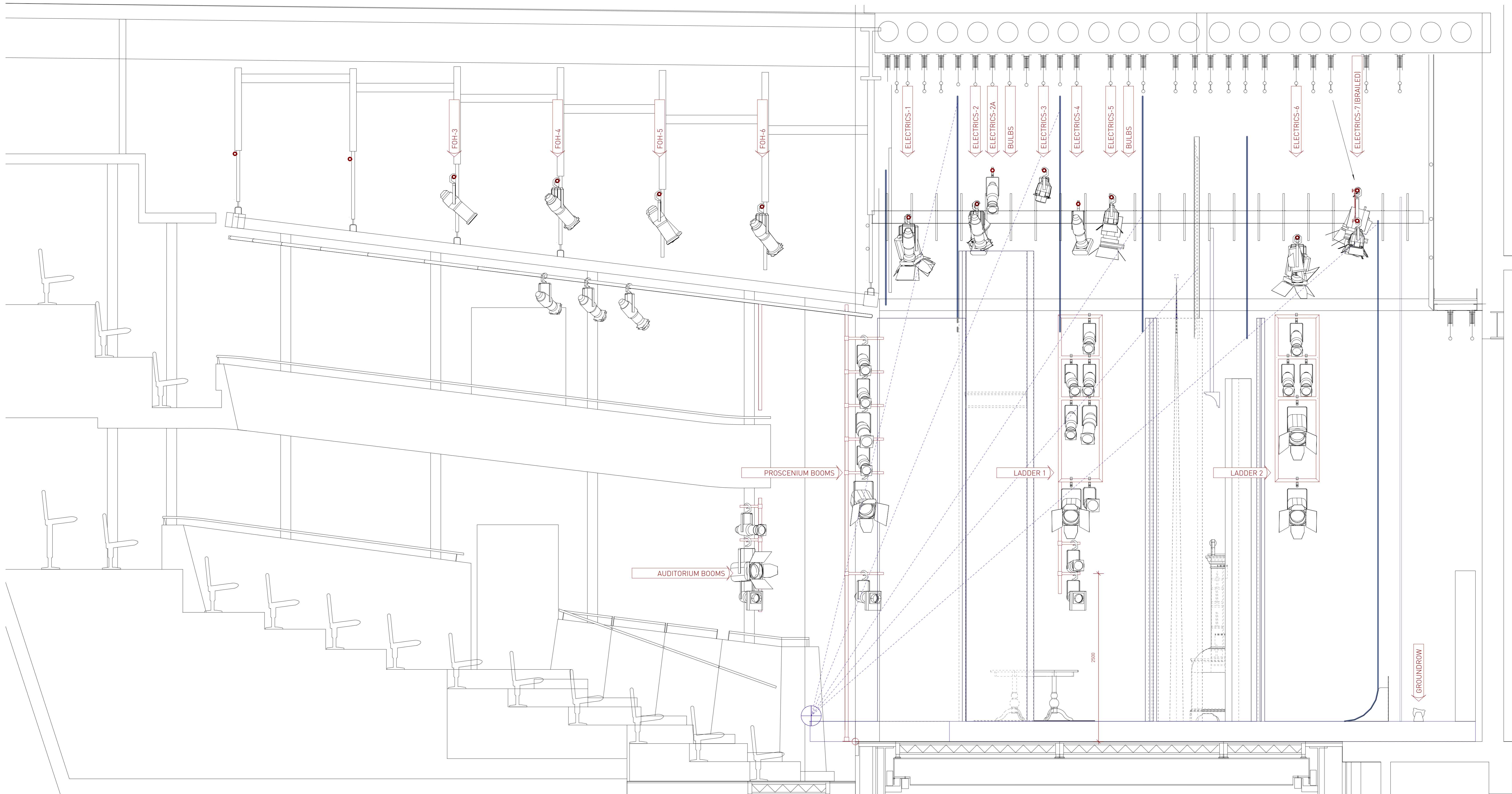


**LINE SCHEDULE**

Line	Qty	Description	Trim
US Winch	9195	Bounce Cloth	
DS Winch	8979		
20	8128	BP Screen	
19	7630	Gauge	
18	7100	ELECTRICS 7 (Banded)	8200
17	6840		
16	6586	ELECTRICS 6	7500
L2	4331		
15	4048	Usage Sliders	
14A	5830	Border	
14	5880	Photo Sliders	
13	5310	Cornice	
12	5080	Map	
11	4790	Faisal Curtains	
10	4310	Border	6100
9	4090	Bulbs	
8	3924	ELECTRICS 5	8100
7	3318	ELECTRICS 4	8000
H4	3070	Border	6100
6	2822	ELECTRICS 3	8500
H3	2564		
5	2310	Bulbs	
H2	2043	ELECTRICS 2A (Hanging Basket)	
4	1810	ELECTRICS 2	8000
H1	1555	Border	6100
3	1296		
2A	1054		
2	799	ELECTRICS 1	7800
1	639		
He. Br.	479		



3	FIRST NIGHT	30/4/16
2	FINAL	21/4/16
1	2nd Draft	11/4/16

No.	Revision	Date
REVISION HISTORY		

Production: **LAWRENCE AFTER ARABIA**  
by Howard Brenton

Drawing: **LIGHTING SECTION**

Director	John Dove	Designer	Michael Taylor
Venue/Company	HAMPSTEAD THEATRE		
Date	30 Apr, 2016 16:25:48	Drawing No.	Sht-3
Scale	1:25 printed @100% on A0	Drawn By	Mark D

Mark Doubleday  
mobile: 07941 102541 email: markdoubleday@mac.com | www.markdoubleday.co.uk  
7 West Catherine Place, Edinburgh, EH12 5HZ, United Kingdom