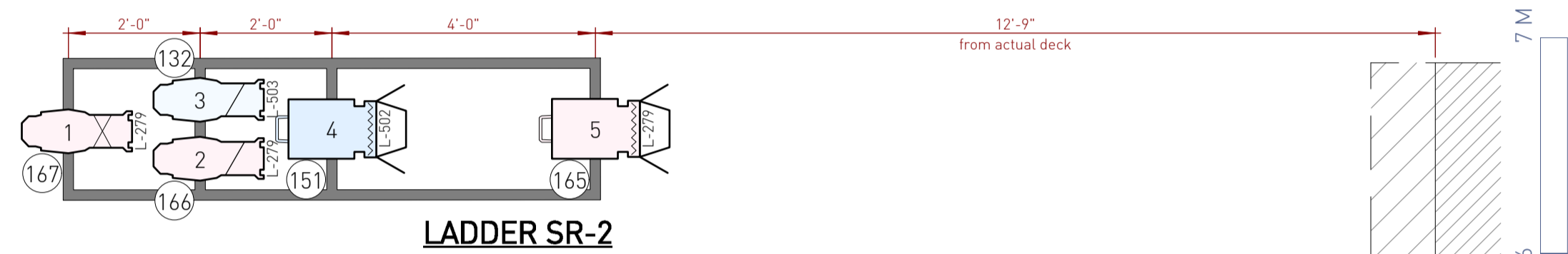
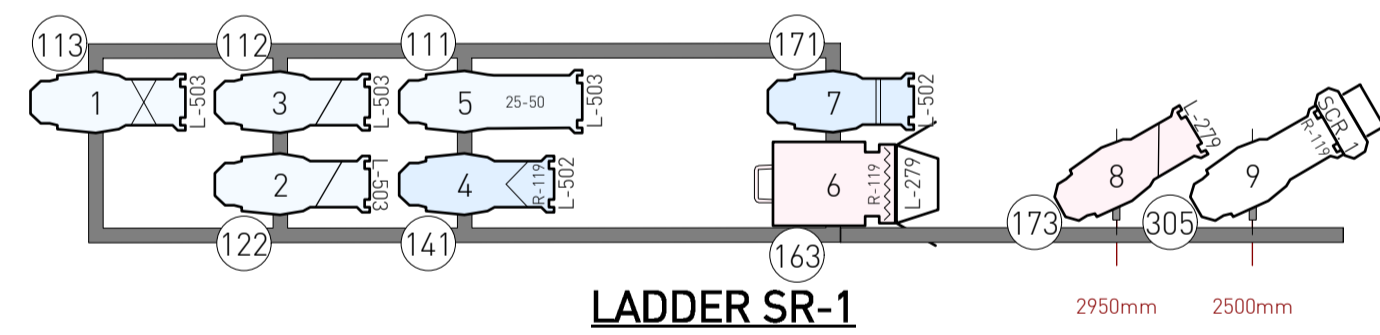


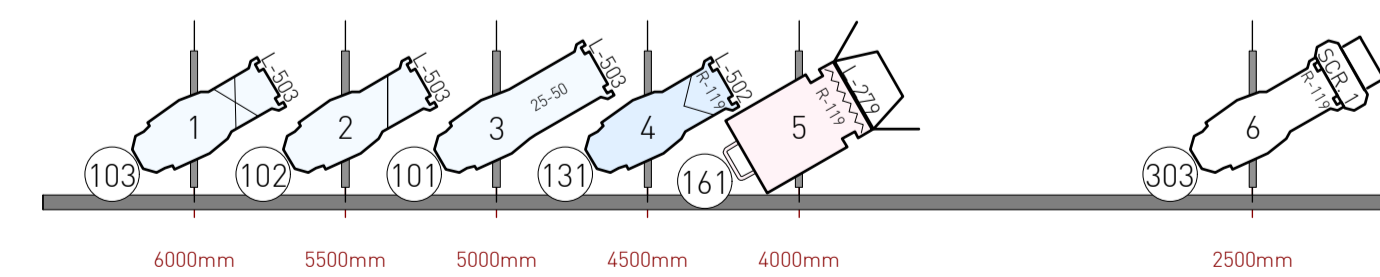
1 ELECTRICS-6 & 7 Section Detail
Sht-2 Scale: 1:25



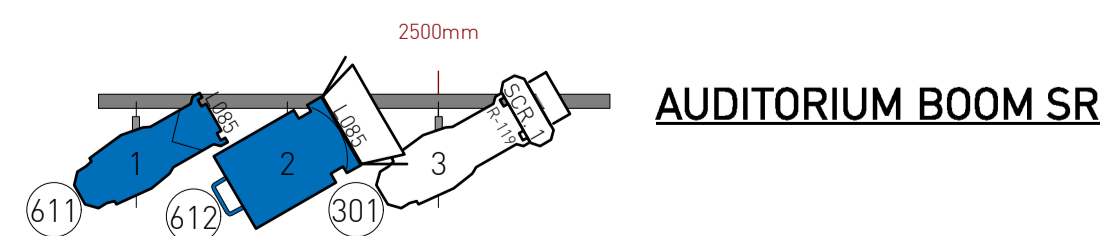
LADDER SR-2



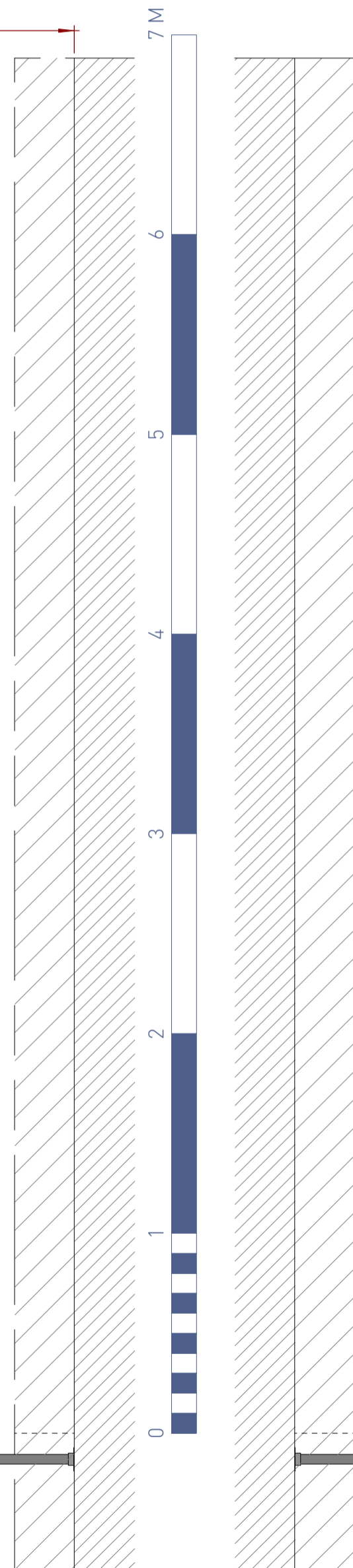
LADDER SR-1



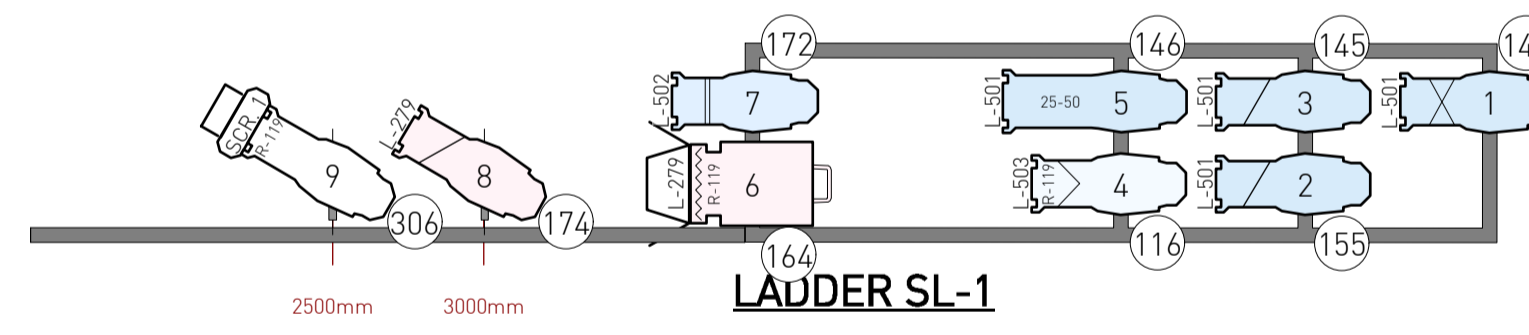
PROSC BOOM SR



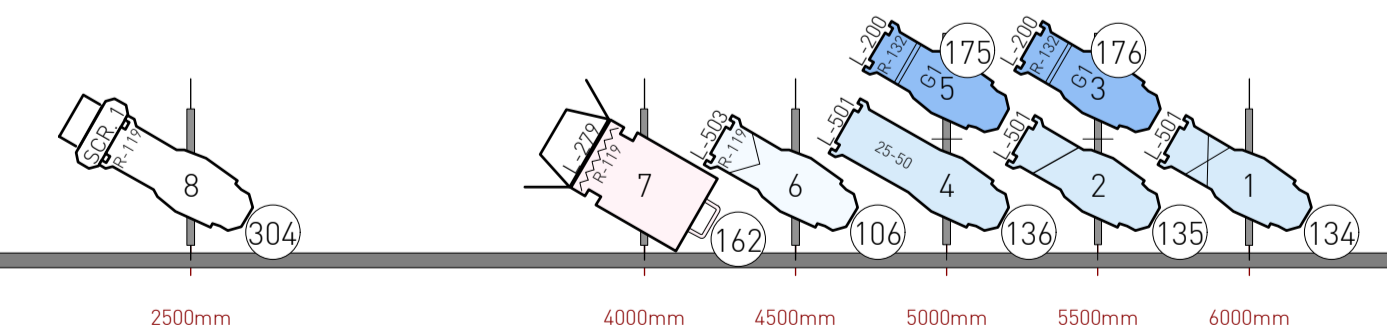
AUDITORIUM BOOM SR



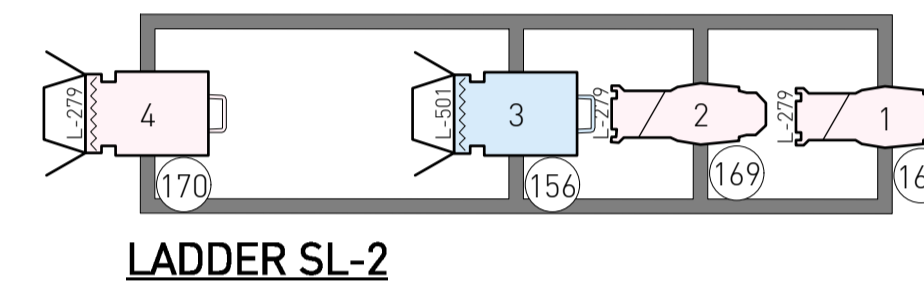
PROSC BOOM SL



LADDER SL-1



AUDITORIUM BOOM SL



LADDER SL-2

GEL STRINGS

Frame	Colour	DMX
1	L728 0%	0
2	L733 4%	12
3	L137 9%	24
4	L161 14%	36
5	R76 18%	48
6	LHT085 23%	60
7	R81 28%	72
8	R82 33%	85
9	R3220 38%	97
10	L200 42%	109
11	L283 47%	121
12	L201 52%	133
13	L202 56%	145
14	L203 61%	157
15	L130 66%	170
16	L206 71%	182
17	L205 76%	194
18	L204 80%	206
19	L232 85%	218
20	L108 90%	230
21	L135 94%	242
22	L106 100%	255

INSTRUMENT KEY

INSTRUMENTS

	ETC Source 4 19° @ 750w HPL	5
	ETC Source 4 26° @ 750w HPL	12
	ETC Source 4 36° @ 750w HPL	6
	ETC Source 4 50° @ 750w HPL	6
	ETC Source 4 70° @ 750w HPL	4
	ETC Source 4 25°-50° Zoom @ 750w HPL	4
	Robert Juliat 1kw Fresnel @ 1.2kw CP70	8
	Robert Juliat 1kw PC @ 1.2kw CP70	2

ACCESSORIES

	Rainbow 6" Scroller	6
	6.25" Short Top Hat	6

LABEL KEY

	Accessory
	Colour
	Frost
	Beam Angle
	Gate
	Unit Number
	Measurement From C/L
	Channel

Notes

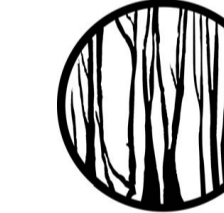
- ETC Source 4 Pars should be under-hung by 450mm [See diagram sht.2]
- Fixtures travel with Hanging Baskets on pipe

Other Notes

- All trim measurements are from the actual stage floor and are to the hanging point of the fixture
- All trim measurements are shown in metric apart from ladder spacing which is preconfigured in Imperial
- All fixtures with scrollers should have G-108 fitted in colour frame
- All Scrollers should have frost fitted to the colour slot of the scroller

GOBOS

DHA 6569



3	FIRST NIGHT	30/4/16
2	FINAL	21/4/16
1	2nd Draft	11/4/16

No.	Revision	Date
REVISION HISTORY		

Production
LAWRENCE AFTER ARABIA

by
Howard Brenton

Drawing
SIDE LIGHT

Director John Dove Designer Michael Taylor

Venue/Company
HAMPSTEAD THEATRE

Date 30 Apr, 2016 Time: 16:25:25 Drawing No. **Sht-2**
07
3

Scale 1:25 printed @100% on A0 Drawn By Mark D

Mark Doubleday
mobile: 07941 102254 | email: markdoubleday@mac.com | www.markdoubleday.co.uk
7 West Catherine Place, Edinburgh, EH12 5HZ, United Kingdom