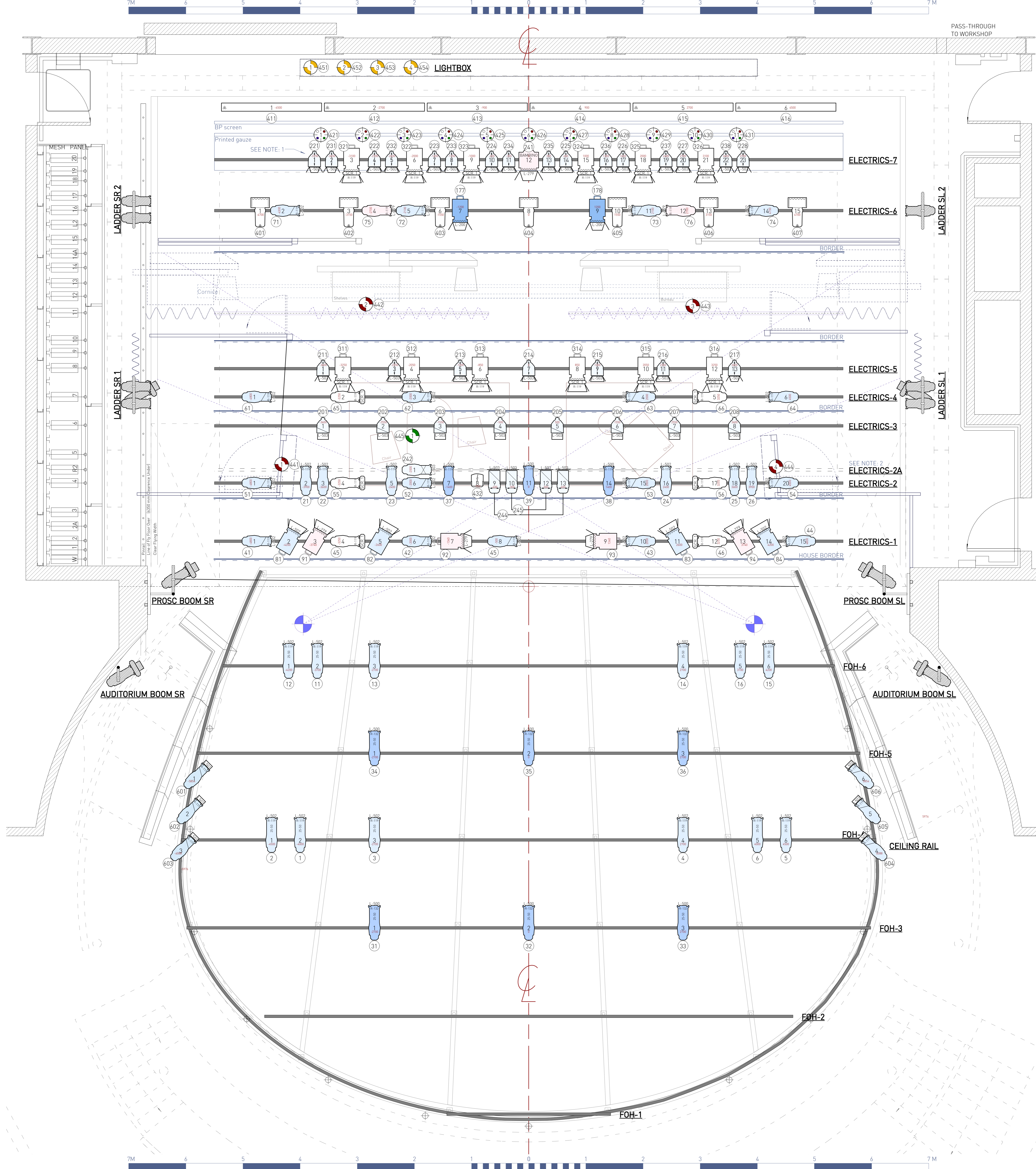


Line	Dist	Description	Trim
LIS Winch	9195	Bounce Cloth	
DS Winch	8878		
20	8128	BP Screen	
19	7630	Gauze	
18	7100	ELECTRICS-7 (Braided)	8200
17	6840		
16	6586	ELECTRICS-6	7500
L2	6331		
15	6048	Upstage Sliders	
14A	5830	Border	
14	5580	Photo Sliders	
13	5310	Cornice	
12	5080	Map	
11	4790	Faisal Curtains	
10	4310	Border	6100
9	4090	Bulbs	
8	3824	ELECTRICS-5	8100
7	3318	ELECTRICS-4	8000
H4	3070	Border	6100
6	2822	ELECTRICS-3	8500
H3	2566		
5	2310	Bulbs	
H2	2043	ELECTRICS-2A (Hanging Baskets)	
4	1810	ELECTRICS-2	8000
H1	1555	Border	6100
3	1296		
2A	1054		
2	798	ELECTRICS-1	7800
1	639		
Hse. Bdr.	479		



Frame	Colour	DMX
1	L728 0%	0
2	L733 4%	12
3	L137 9%	24
4	L161 14%	36
5	R76 18%	48
6	LHT086 23%	60
7	R81 28%	72
8	R82 33%	85
9	R3220 38%	97
10	L200 42%	109
11	L283 47%	121
12	L201 52%	133
13	L202 56%	145
14	L203 61%	157
15	L130 66%	170
16	L206 71%	182
17	L205 76%	194
18	L204 80%	206
19	L232 85%	218
20	L108 90%	230
21	L135 94%	242
22	L106 100%	255

INSTRUMENT KEY			
	ETC Source 4 19° @ 750w HPL	6 / 30	
	ETC Source 4 26° @ 750w HPL	35 / 36	
	ETC Source 4 36° @ 750w HPL	23 / 22	
	ETC Source 4 50° @ 750w HPL	6 / 4	
	ETC Source 4 70° @ 750w HPL	4 / 5	
	ETC Source 4 25°-50° Zoom @ 750w HPL	22 / 24	
	Robert Juliat 1kw Fresnel @ 1.2kw CP70	30 / 30	
	Robert Juliat 1kw PC @ 1.2kw CP70	2 / 24	
	Strand Bambino 5kw Fresnel @ 5kw DPY	1 / 2	
	ETC Source 4 PAR NSP @ 750w HPL	8 / 15	
	ETC Source 4 PAR MFL @ 750w HPL	23 / 15	
	PAR 64 CP61 @ 1kw CP61/FFP	4 / 30	
	Table Lamp @ 50w 12v 50w Capsule	4 / 0	
	Wireless Practical @ 50w 12v 50w Capsule	1 / 0	
	Lightbox Circuit 40w Festoon Fitting	4 / 0	
	LED 24V RGBW (1m length) RGBW	11 / 0	
	ETC Source 4 LED Cyc (v.2) @ 171-246w LED	7 / 0	
	ChromaQ Colorforce 72 @ 720w LED	6 / 0	
	AF1000 Data Flash @ 1.65kw S01/H01	1 / 0	
	Rainbow 6" Scroller	12 / 12	
	Rainbow 8" Scroller	12 / 12	
	6.25" Short Top Hat	12 / 20	
	7.5" Short Top Hat	8 / 20	
	Barrndoors	54 / 0	

ACCESSORIES			
	Accessory		
	Colour		
	Frost		
	Beam Angle		
	Unit Number		
	Measurement From C/L		
	Channel		

Notes

- ETC Source 4 Pars should be under-hung by 450mm (See diagram sht.2)
- Fixtures travel with Hanging Baskets on pipe

Other Notes

- All trim measurements are from the actual stage floor and are to the hanging point of the fixture
- All trim measurements are shown in metric apart from ladder spacing which is preconfigured in Imperial
- All fixtures with scrollers should have G-108 fitted in colour frame
- All Scrollers should have frost fitted to the colour slot of the scroller



No.	Revision	Date
3	FIRST NIGHT	30/4/16
2	FINAL	21/4/16
1	2nd Draft	11/4/16

Production	
LAWRENCE AFTER ARABIA	
by Howard Brenton	
Drawing	
LIGHTING PLAN	
Director	John Dove
Designer	Michael Taylor
Venue/Company	HAMPSTEAD THEATRE
Date	30 Apr, 2016 16:24:56
Scale	1:25 printed @100% on A0
Drawn By	Mark D

Mark Doubleday
 mobile: 07941 102254 | email: markdoubleday@mac.com | www.markdoubleday.co.uk
 7 West Catherine Place, Edinburgh, EH12 9HZ, United Kingdom