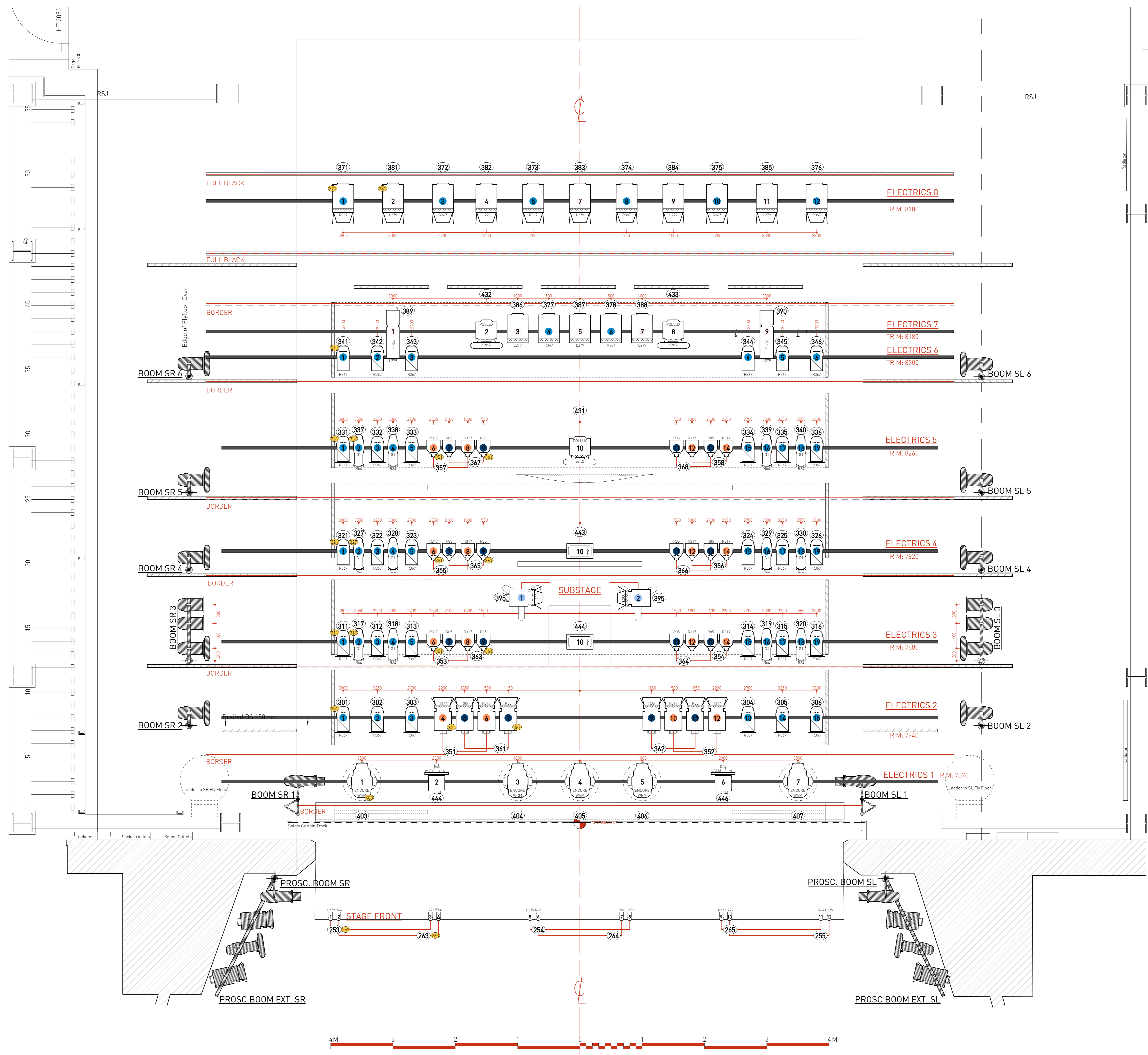
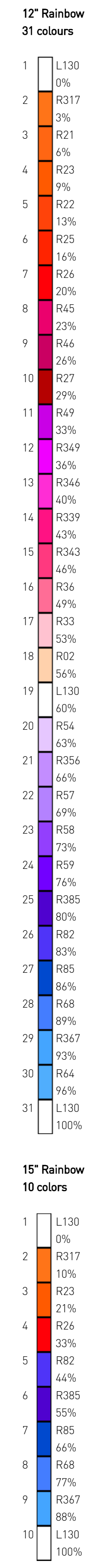


INSTRUMENT SYMBOLS - ALL AREAS

| INSTRUMENTS        |                                      |         |
|--------------------|--------------------------------------|---------|
|                    | ETC Source 4 10° @ 750w              | 1 / 6   |
|                    | ETC Source 4 19° @ 750w              | 14 / 15 |
|                    | ETC Source 4 26° @ 750w              | 12 / 14 |
|                    | ETC Source 4 36° @ 750w              | 16 / 16 |
|                    | ETC Source 4 50° @ 750w              | 15 / 28 |
|                    | ETC Source 4 15-30 Zoom @ 750w       | 16 / 20 |
|                    | Robert Juliat 710 SX @ 2.5kW         | 20 / 20 |
|                    | Strand Cantata 11-26 Zoom @ 1.2kW    | 4 / 4   |
|                    | Strand Cantata 18-32 Zoom @ 1.2kW    | 8 / 8   |
|                    | Strand Cantata 26-44 Zoom @ 1.2kW    | 8 / 8   |
|                    | Robert Juliat 1kw Fresnel @ 1.2kW    | 37 / 46 |
|                    | Juliat Fresnel 325 Fresnel @ 2.5kW   | 16 / 18 |
|                    | Strand Pollux 5K Fresnel @ 5kW       | 3 / 4   |
|                    | ETC Source 4 PAR MFL @ 575w          | 24 / 20 |
|                    | PAR 64 CP61 @ 1kW                    | 38 / 40 |
|                    | PAR 64 CP62 @ 1kW                    | 14 / 40 |
|                    | PAR 16 @ 50/75w                      | 12 / 12 |
|                    | VFX Stormcloud Disc-Narrow Lens      | 2 / 2   |
|                    | Strand Toccata VFX @ 2.5kw           | 2 / 2   |
| MOVING LIGHTS      |                                      |         |
|                    | MAC Encore Performance WRM @ 600w    | 7 / 8   |
| ACCESSORIES        |                                      |         |
|                    | Rainbow 12" Scroller                 | 22 / 22 |
|                    | Rainbow 15" Scroller                 | 3 / 3   |
|                    | Gobo Rotator                         | 1 / 1   |
|                    | Rosco I-Cue Intelligent Mirror       | 2 / 2   |
|                    | KK Wheel with DHA DD18 [Dot Breakup] | 4 / 6   |
| STATIC ACCESSORIES |                                      |         |
|                    | Iris                                 | 9 / 20  |
|                    | 6.25" Top Hat                        | 24 / 20 |
|                    | Barndoors                            | 49      |
| EFFECTS            |                                      |         |
|                    | Martin Atomic Strobe 3000 @ 3.3kw    | 2 / 2   |
|                    | HAZER MDG Atmosphere                 | 1 / 1   |
| LABELS             |                                      |         |
|                    | Accessory                            |         |
|                    | Colour                               |         |
|                    | Beam Angle                           |         |
|                    | Gate                                 |         |
|                    | Unit Number                          |         |
|                    | Measurement From C/L                 |         |
|                    | Group                                |         |
|                    | Channel                              |         |



LINE SCHEDULE

| Line | Dist  | Description          | Trim |
|------|-------|----------------------|------|
| 51   | 10421 |                      |      |
| 50   | 10408 | Full Black           |      |
| 49   | 10195 |                      |      |
| 48   | 9979  | ELECTRICS 8          |      |
| 47   | 9769  |                      |      |
| 46   | 9556  |                      |      |
| 45   | 9323  |                      |      |
| 44   | 9135  | Black Blinder        |      |
| 43   | 8927  | Legs                 |      |
| 42   | 8719  | US Cloths            |      |
| 41   | 8511  | US Cloths Centre     |      |
| 40   | 8303  | Border               |      |
| 39   | 8095  | Side Cloths          |      |
| 38   | 7887  | ELECTRICS 7          |      |
| 37   | 7679  |                      |      |
| 36   | 7471  | ELECTRICS 6          |      |
| 35   | 7263  |                      |      |
| 34   | 7055  | Legs & Border        |      |
| 33   | 6848  |                      |      |
| 32   | 6640  |                      |      |
| 31   | 6432  |                      |      |
| 30   | 6224  | Side Cloths          |      |
| 29   | 6016  | ELECTRICS 5          |      |
| 28   | 5808  |                      |      |
| 27   | 5600  | Boat Sail            |      |
| 26   | 5392  | Fretwork Door        |      |
| 25   | 5184  | Legs & Border        |      |
| 24   | 4976  | Side Cloths          |      |
| 23   | 4768  | Side Cloth Pick-up   |      |
| 22   | 4560  | US Cloth Pick-up     |      |
| 21   | 4352  | ELECTRICS 4          |      |
| 20   | 4144  | Headboard            |      |
| 19   | 3936  | Legs                 |      |
| 18   | 3728  | Black Border         |      |
| 17   | 3520  | Side Cloths Pick ups |      |
| 16   | 3312  |                      |      |
| 15   | 3104  |                      |      |
| 14   | 2900  | ELECTRICS 3          |      |
| 13   | 2694  | Side Cloths Pick ups |      |
| 12   | 2486  | Legs                 |      |
| 11   | 2278  | Black Border         |      |
| 10   | 2092  | Front Cloth          |      |
| 9    | 1887  | Side Cloth Pick-up   |      |
| 8    | 1682  | ELECTRICS 2          |      |
| 7    | 1477  | Legs                 |      |
| 6    | 1267  | Side Cloths          |      |
| 5    | 1067  | Black Border         |      |
| 4    | 862   |                      |      |
| 3    | 657   | ELECTRICS 1          |      |
| 2    | 452   | False Prosc.         |      |
| 1    | 247   | Black Border         |      |

General Notes

- The SETTING LINE is the upstage edge of the Iron.
- All trim heights are from the Deck directly under the lighting position
- All boom measurements are from the hanging point of the instrument
- Please note "SY" within an instrument denotes a short yoke hanging configuration
- Please note lamp orientation on all beamlights
- LX Bar 7: All instruments should be level, which will entail a drop of approx 200mm for the 2K Fresnels and the Cantata 11/26.

Gobos

- G1: Rosco 777806 12/5
- G2: From Stock 2
- Martin Mac Encore Gobo Wheel